

MV-620

X-TEC Motion Sensor

SUREN



Microwave Doppler technology **X-TEC™** high performance!

Superior False Detection Immunity

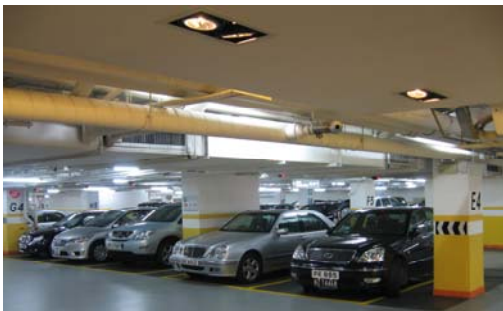
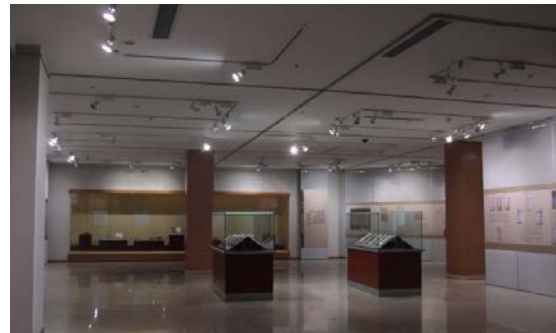
- Reliable 10 GHz Microwave** Doppler technology plus digital signal processing
 - Detects intruders, not distractions
 - De-emphasis of constant motion signals, as from fans
 - Digital filtering of fluorescent light frequencies, 50/60 Hz selectable
- Key-parameter supervision, with Failure Indication

Temperature Range

- Operation from -10°C to +55°C

Reliable Detection

- Robust planar-antenna microwave transceiver delivers strong intruder detection signals
- Sensitive detection even in near-human temperature environments



Applications

- Car-park garage lighting-control
- Vehicle storage yard-security
- Museum security

Product Features

- Look-down detection directly below the sensor to catch wall-creeping intruders
- Selectable processing sensitivity for different environmental requirements
- Sensitive tamper detection switch
- Full-time supervision of microwave function
- Continuous supervision of:
 - Power supply voltage
 - Ambient temperature
- Failure indication:
 - Blinking LED
 - Non-closing of detection relay after any detection (Note: sensor will NOT initiate an relay upon failure.)
- Remote LED Enable control input



Swivel Mount
MB-100



CE

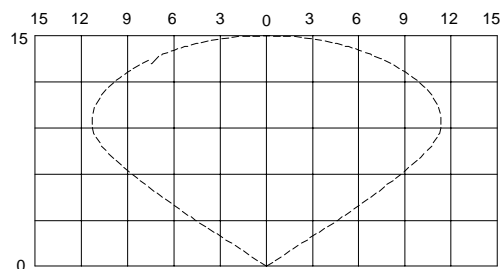
No
Aluminum
Electrolytic
Capacitors

Easy Installation

- 10-minute walk-test mode
- Deep wire channels and dual cable entry
- 45-degree corner-mounting surfaces
- Knock-out holes for mounting and wiring
- Swivel-mount accessory interface
- 2 LED colors: Detect, Microwave-event

Microwave monitored area

Top View, in meters



Specifications

Range:	15 m in sensor-facing direction 15 m at 45° angle from sensor-facing direction	
Microwave frequency	Near 10 GHz, according to country where sold	
Power Supply:	Voltage	Current
	8 – 16 Vdc	15 mA at 12 Vdc
Alarm Relay:	Solid state Form A (NC) 50 mA 30 V; 1500 Vrms iso.	
Tamper Switch:	Form A (NC) 50 mA @ 30 Vdc	
RF Immunity:	20 V/m 10 – 1000 MHz; 10 V/m 1-2 GHz	
Temperature Range:	-10°C to +55°C	
Housing:	High-impact ABS	
Dimensions:	112 x 50 x 42 mm (H x W x D)	

All specifications are subject to change without notice.